



# Configuring Nvidia Surround/Mosaic SimVisuals 2

[www.immersaview.com](http://www.immersaview.com)



# Contents

|  |          |
|--|----------|
| <b>Introduction</b>                          | <b>2</b> |
| <b>Nvidia Surround</b>                       | <b>2</b> |
| Maximising windows across the entire display | 4        |
| <b>Nvidia Mosaic</b>                         | <b>5</b> |

## Introduction

Nvidia Geforce GTX and RTX graphics cards allow you to use a feature called **Surround** to group multiple graphics card outputs into one seamless spanned display. Nvidia Quadro cards call this feature **Mosaic** which has slightly different benefits and use cases.

## Nvidia Surround

When using Nvidia Geforce graphics cards, you will need to set up Nvidia Surround to use desktop applications with SimVisuals 2.

Right-click on the desktop and click **NVIDIA Control Panel**, otherwise, open the start menu and search for **NVIDIA Control Panel**.

Under **3D Settings**, click **Configure Surround, PhysX**

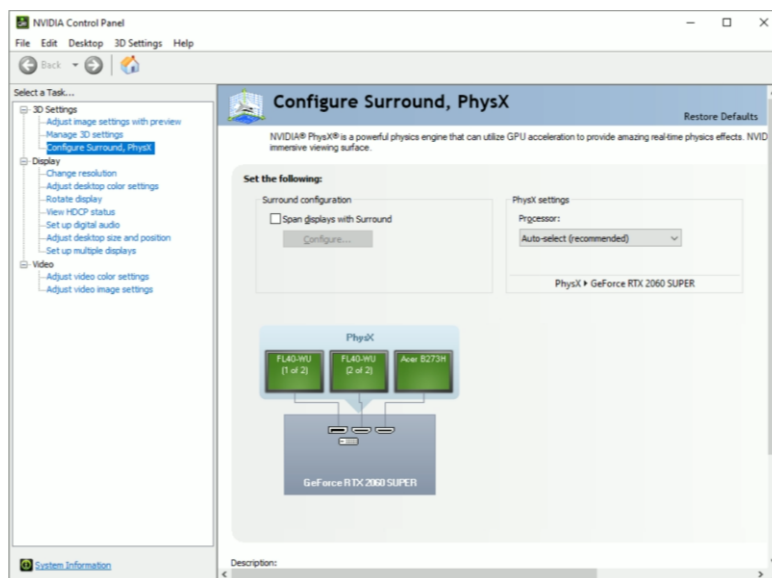


Figure.1. Nvidia Control Panel – Geforce Graphics Card

Click the checkbox **Span Displays with Surround**, then click **Configure**.



**Note:** There may be some apps that Nvidia Control Panel requires you to close before proceeding, once you have closed the apps, click **Continue**.

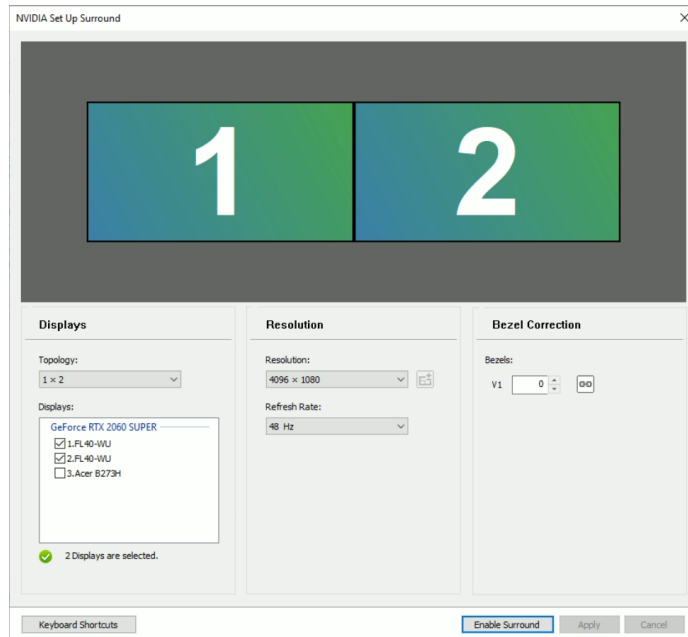


Figure.2. Nvidia Surround Configuration

Select the **Topology** that your projectors are laid out in, this is represented by rows and columns. In our example, we have two projectors side-by-side, 1 row with 2 columns, 1 x 2.

Next, select the checkboxes next to the displays/projectors that form a part of your overall system.

In the resolution section, attempt to select a multiple of your projector’s native resolution. In our example, the projectors are 1920x1200, we have 2 columns, the native resolution is 3840x1200.

Drag the displays so the numbering matches the identifiers shown across each projector.

Click **Enable Surround**.

**Note:** In some cases, Nvidia Surround will select a default resolution which may not be native for your projectors and you may not have any other options in the dropdown box, we can resolve this issue in the following step.

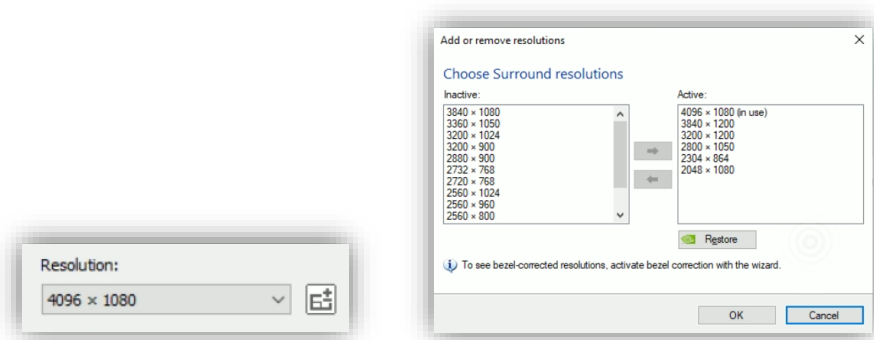


Figure.3. Nvidia Surround Resolution Selection



Now that surround is enabled, there should be more options in the dropdown box, if not, click the +/- button next to the dropdown. Select your projector's native resolution multiple, and use the right arrow button to add it to the **Active** list.

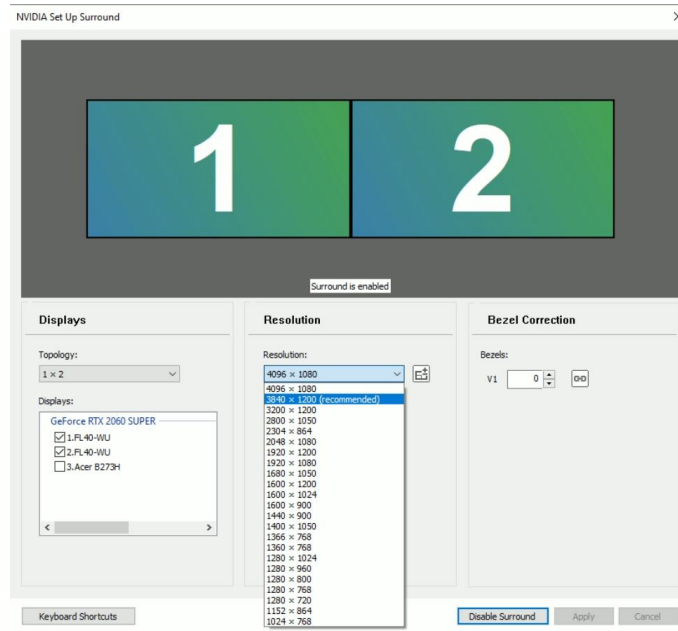


Figure.4. Nvidia Surround Native Projector Resolution

You should now be able to select the native resolution for your projectors, then press **Apply**.

**Tip:** If the apply button is off the screen and you can't reach it, press **Alt + A** on the keyboard.

### Maximising windows across the entire display

By default, when you press the maximise button on any window with Surround enabled, it will only maximise to the size of one projector.

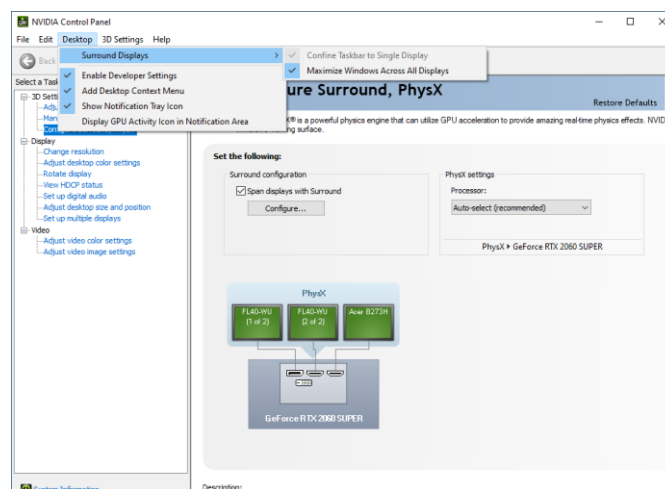


Figure.5. Nvidia Surround Maximising Windows Configuration

To have windows maximise to the full size of your screen, Click **Desktop > Surround Displays > Maximise Windows Across All Displays**



# Nvidia Mosaic

When using Nvidia Quadro graphics cards, you will need to set up Nvidia Mosaic to use desktop applications with SimVisuals 2.

Right-click on the desktop and click **NVIDIA Control Panel**, otherwise, open the start menu and search for **NVIDIA Control Panel**.

Under **Workstation**, click on **Set up Mosaic**

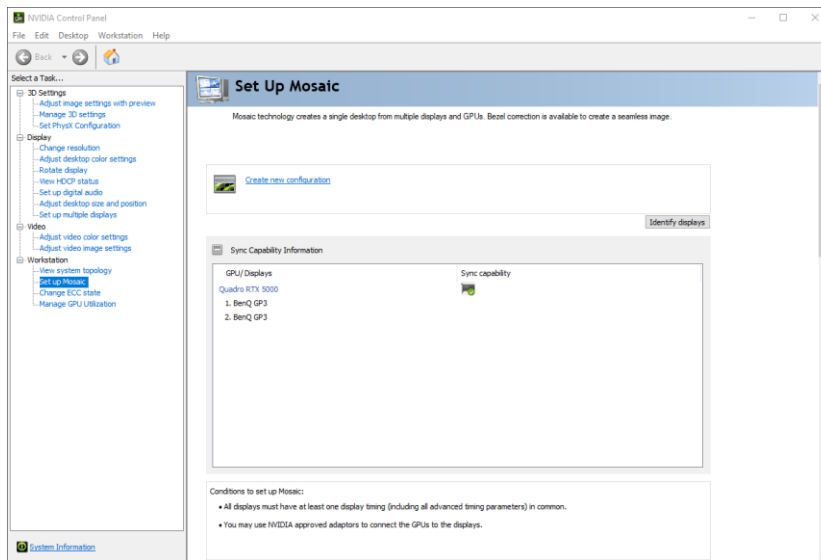


Figure.6. Nvidia Control Panel – Geforce Graphics Card

Click **Create new configuration**

**Note:** There may be some apps that Nvidia Control Panel requires you to close before proceeding, once you have closed the apps, click **Continue**.

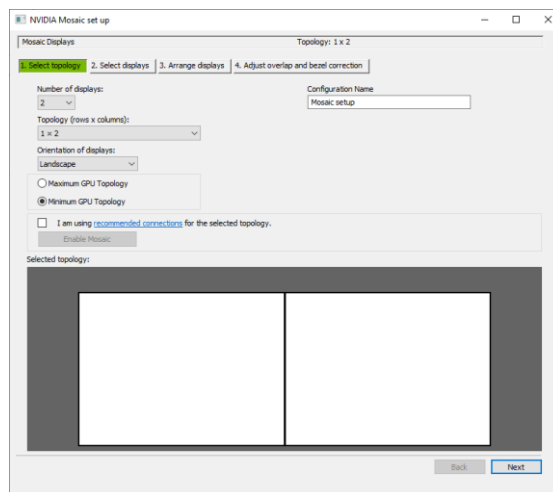


Figure.7. Nvidia Mosaic Topology

Select the **Topology** that your projectors are laid out in, this is represented by rows and columns. In our example, we have two projectors side-by-side, 1 row with 2 columns, 1 x 2. Then press **Next**

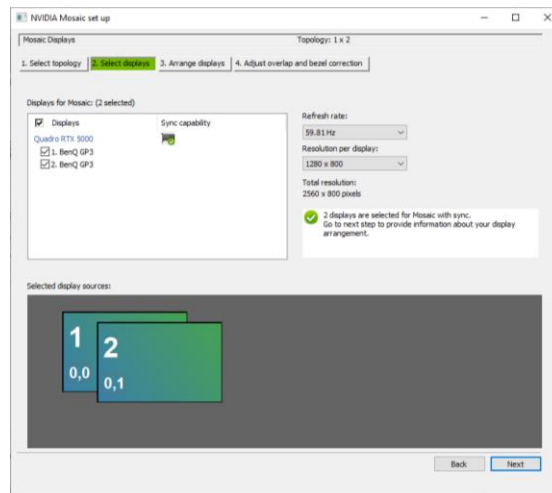


Figure.8. Nvidia Mosaic Display Selection

Next, select the checkboxes next to the displays/projectors that form a part of your overall system. In the resolution section, select the projector’s native resolution. Then click **Next**

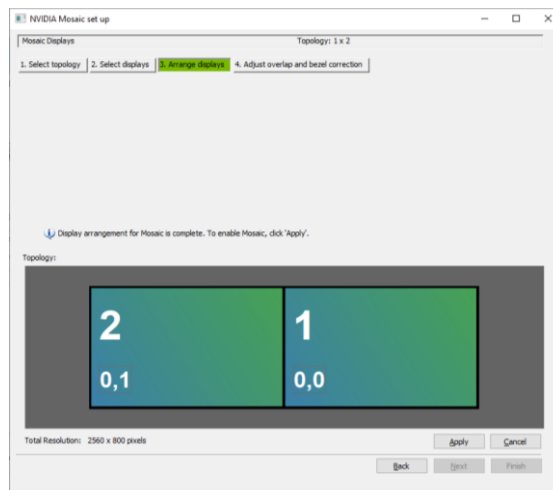


Figure.9. Nvidia Mosaic Display Arrangement

Drag the displays so the numbering matches the identifiers shown across each projector, then click **Apply**

Once you have confirmed that the settings have applied correctly, click **Finish**, then close Nvidia Control Panel.